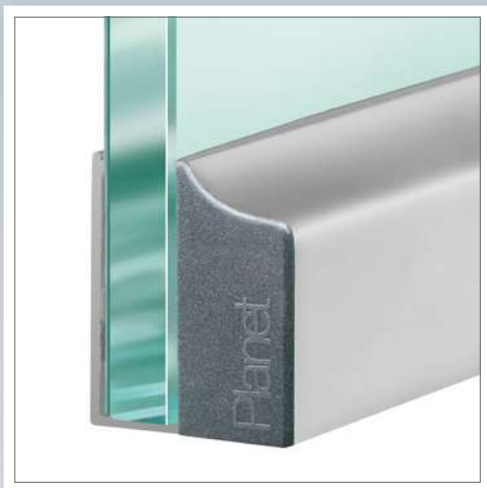
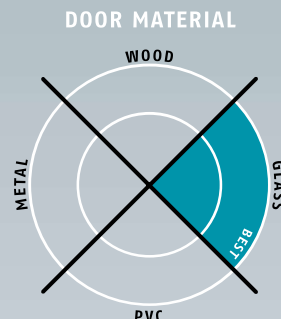


# Planet KG-A8 | A10 → 16,5 x 35 mm | ↓ 18 mm | ≤ 48 dB



## Main features

- Seal height up to ↓ 18 mm
- Acoustic insulation up to ≤ 48 dB in case of an optimal sealing
- For one and double leaf folding all-glass doors, with a glass thickness of 8 to 10 mm
- Planet KG-A8 | A10 to be attached and glued
- Planet drop-down seal cemented in A8 / A10 protection profile
- Unilateral and soundless release, silent seal
- Due to parallel drop-down no trailing on the floor
- Automatic compensation at inclined floors
- High-grade silicone lip, simple lift height adjustment
- Can be shortened up to the next shorter length on stock
- 7 years warranty

## Versions / options

- Planet KG-A8 | A10 → RD ≤ 48 dB, smoke-shielding
- Planet KG-A8 | A10 → FH+RD ≤ 48 dB, fire-retardant + smoke-shielding
- Option bevel lip ≤ 44 dB, up to ↓ 22 mm, for uneven floors
- Special versions on request

## Surfaces

- Protection profile silver anodised EV1
- Protection profile stainless steel satin anodised

## Door types with Planet KG-A8 | A10

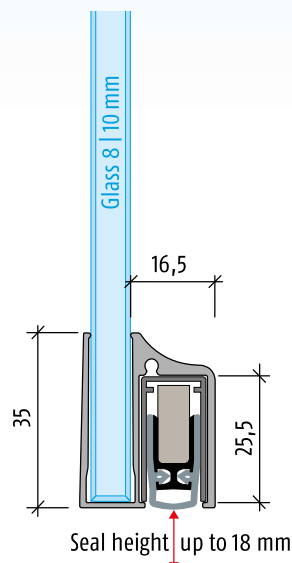


## More functions



## Technical specifications

|                        |  |
|------------------------|--|
| Profile material       | aluminum, → 16,5 x 35 mm, silver anodised EV1 or stainless steel satin anodised        |
| Seal profile           | high-grade silicone or high-grade self-extinguishing silicone                          |
| Seal height            | up to ↓ 18 mm  |
| Sound absorption value | up to ≤ 48 dB at 7 mm space to the floor;<br>up to ≤ 46 dB at 14 mm space to the floor |
| Lift height adjustment | on the release knob with an Allen key 3 mm   |
| Lengths in stock       | 459, 584, 709, 834, 959, 1084, 1209, 1334, 1459 mm                                     |
| Special lengths        | on request up to 6000 mm, sliding doors up to 1600 mm                                  |
| Release                | unilaterally on hinge side   |
| Can be shortened       | up to the maximum of 125 mm  |
| Fastening              | to be glued  |
| Frame protector plate  | stainless, hammer fixed, 20 x 20 mm  |
| Test approvals         | on request   |





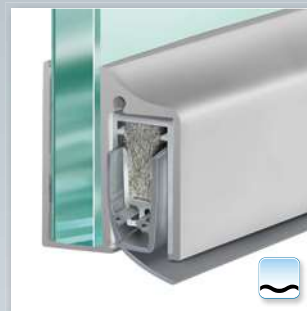
Planet KG-A8 | A10, attached and glued



Planet KG-A8 | A10, attached and glued release side



Planet KG-A8 | A10, with cover plate



**Option:** Planet KG-A8 | A10, bevel lip for **uneven floors**



**Accessories:** Planet frame protector plate, type 1 (stainless), 20 x 20 mm



Set of Planet cover plates Planet KG

## Order specifications

|   |                              |
|---|------------------------------|
| Planet KG-A8   A10 → RD ≤ 48 dB<br>→ silver anodised EV1<br>incl. set of cover plates and frame protector plate, type 1               | Prod. code 38xxx-A8   A10*   |
| Planet KG-A8   A10 → FH+RD ≤ 48 dB<br>→ silver anodised EV1<br>incl. set of cover plates and frame protector plate, type 1            | Prod. code 39xxx-A8   A10*   |
| Planet KG-A8   A10 → RD ≤ 48 dB<br>→ stainless steel satin anodised<br>incl. set of cover plates and frame protector plate, type 1    | Prod. code 38xxx-A8X   A10X* |
| Planet KG-A8   A10 → FH+RD ≤ 48 dB<br>→ stainless steel satin anodised<br>incl. set of cover plates and frame protector plate, type 1 | Prod. code 39xxx-A8X   A10X* |

\* xxx = refer to price list for profile length

## Accessories | Options

|  |  |
|--|--|
| Planet frame protector plate type 1 (stainless); possible type 2/3/4/5<br>→ refer to chapter Accessories   Options | Prod. code 900014                          |
| Cut the Planet to fix dimension  | Prod. code 900225                          |
| Set of Planet cover plates Planet KG   | Prod. code 900252                          |
| Sliding door   | Prod. code 900908                          |
| Bevel lip (≤ 44 dB, up to ↓ 22 mm)<br>DIN L or DIN R   | refer to price list, options / supplements |

## Advertising text



### Planet KG-A8 | A10 → RD (smoke-shielding) ≤ 48 dB

Automatic door drop-down seal **Planet KG-A8 | A10 → RD ≤ 48 dB**, unilateral release with parallel drop-down and automatic compensation at inclined floor, protection profile silver anodised EV1 or stainless steel satin anodised, to be attached and glued, seal height up to ↓ 18 mm. Lip from silicone. Protection profile and profile made from aluminum → 16,5 x 35 mm, incl. cover plate on lock side for folding doors.

## Advertising text



### Planet KG-A8 | A10 → FH+RD (fire-retardant + smoke-shielding) ≤ 48 dB

Automatic door drop-down seal **Planet KG-A8 | A10 → RD+FH ≤ 48 dB**, appropriate for fire-retardant and smoke-shielding doors, sound absorption value SK 1-3, unilateral release with parallel drop-down and automatic compensation at inclined floor, protection profile silver anodised EV1 or stainless steel satin anodised, to be attached and glued, seal height up to ↓ 18 mm. Lip from silicone. Protection profile and profile made from aluminum → 16,5 x 35 mm, incl. cover plate on lock side for folding doors.